

# 2 Bed Apartment

London, United Kingdom  
Reference: 720565

Guide price of £3,500,000



2 Bedrooms



2 Bathrooms



Apartment

# Property Description

---

A luxury 2 bedroom apartment set in one of London's most desirable riverside locations, Belvedere Gardens, part of the sought after Southbank Place, Waterloo, SE1.

This spectacular apartment comprises 2 double bedrooms with fitted wardrobes, 3 luxury bathrooms, a spacious living area, a fully fitted kitchen with Miele appliances and stunning views. The property has a high specification throughout featuring comfort cooling, underfloor heating and smart home technology.

The modern fully-fitted kitchen features Miele appliances including a dishwasher, integrated wine cooler and full height fridge-freezer. The bedroom is spacious and includes built-in wardrobes as well as an extra storage cupboard in the hallway.

Wooden flooring features throughout the apartments along with triple glazed windows, cooling & heating and a washer/dryer.

The development benefits from excellent amenities which include an on-site gym, swimming pool with spa, exclusive resident's lounge and 24-hour concierge. Southbank Place is in the heart of Southbank and on the doorstep of Waterloo Station (0.2 miles) and moments from the iconic London Eye. The City of London is within easy reach as is London's famous West End.



# Photo Gallery

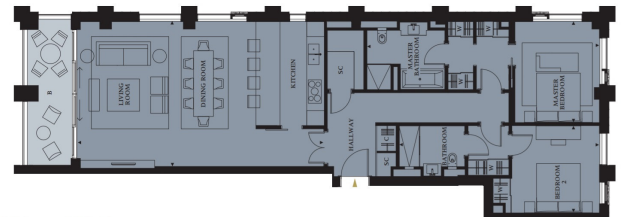






Belveder Gardens  
16th floor

Views overlooking  
Jubilee Gardens &  
River Thames



Apartment area: 132.1 sq m - 1422 sq ft

Living/Kitchen: 5.9m x 10.0m  
Master bedroom en suite: 4.2m x 9.4m  
Bedroom 2: 3.5m x 8.1m

# Property Details

---

- **Property Type:** Apartment
- **Location:** London, United Kingdom
- **Internal Area:** 1422ft<sup>2</sup>
- **Land Area:** 0ft<sup>2</sup>
- **Price:** Guide price of £3,500,000
- **Bedrooms:** 2
- **Bathrooms:** 2